

BEFORE YOU START, GATHER TOGETHER ALL OF THE ASSEMBLY SUPPORT MATERIAL:

- General instructions
- Assembly photos
- List with the order that the parts must be assembled
- "IE" Structure identification sheet

PREPARING THE MATERIAL:

In order to correctly identify the parts, before removing them from the wood sheets, you must mark them with the same numbers that appear on the "IE" sheet (structure identification).

STARTING TO ASSEMBLE:

Using a cutting tool (photo 1), remove the parts from the sheets, eliminating the small tabs that hold them in place. In continuation gently sand down the parts with fine grain sandpaper, to eliminate rough, cross-grain edges.

Following the order indicated in the exploded drawings, from drawing no. 2 up to no. 6, glue the different parts of the structure in place. You can use white glue or quick drying glue (carefully read the manufacturers instructions for use). The result will be the structure as shown in photo 7.

To unify the joints and irregular surfaces use wood putty (photo 8). Once dry sand down and join the whole assembly together.

PAINTING:

When painting the structure use matt finish water based acrylic paints (photos 9-10). Use the photos as a colours guide.

Before painting the structure, bear in mind that the slots for the door and windows when painted will be narrower and this could prevent the doors and windows slotting in correctly (See FITTING DOORS AND WINDOWS Section below).

For the painting the rest of the parts to be painted also use water-based acrylic paint.

FITTING DOORS AND WINDOWS:

All of the doors and windows are slotted into place from the interior of the structure, in the slots provided to this end (photo 11). In some cases it is necessary to fit a section of strip to the bottom of the doors so that they are held in place (the measurements of this strip are indicated in the photos).

In continuation glue the structure to the base, taking as a reference the indicated measurements (photo 12). These measurements correspond to the rear of the structure.

BLOCKS:

The models have one or more various types of block to make the different parts of the model. The measurements for cutting each block are listed on the assembly photos. Except in a few cases, measurements must be taken directly on the construction to ensure a better fit. The blocks are painted or varnished with acrylic water-based paints, depending on the model.

FITTING THE CERAMIC TILE PARTS:

You can use white glue or quick-drying glue (carefully read the manufacturers instructions for use).

Always start by fitting the tiles at the bottom of the structure, first the parts that will not get in the way when fitting later parts (photo 13). Some parts will have to be cut and touched up in order to fit correctly (see photos 16-17).

Models that incorporate ref. H tiles:

Before gluing the tiles line them up on the roofs so that they are proportionally distributed over the whole surface.

The tiles have different combinations and are joined to each other by a small side slot.

They can be broken to size by breaking off the tabs on both sides (photo 14).

These are fitted starting at the bottom of the roof, and placing one on top of the other (photo 15).

To ensure a good finish, they must be adapted with a file or other cutting tool (photos 16 and 17).

The tiles are used to cover various kinds of roofs or finials, as well as to make up different parts (photos 15, 18 and 19).

Models that incorporate ref. D slates:

Before gluing the slates.

They do not have a side slot, like the ref. H tiles, but they can still be broken into smaller pieces (photo 14).

Depending on the model, they can be fitted one on top of the other or joined at the side (photo 15).

To ensure a good finish, they must be adapted with a file or other retouching tool (photos 16 and 17).

The slates are used to cover various kinds of roofs or finial, as well as to make up different parts (photos 15, 18 and 19).

The tiles and slates are the last of the ceramic parts that are attached to the construction.

Once all of these parts have been fitted decorate using water-based acrylic paints.

EXTERIOR AMBIENCE:

Use the product packaging to simulate rocks. Cut out the necessary portions and shape by eroding them. Then attach these pieces using white glue.

To glue the sand (ref. 3914) in place, apply a fine layer of white glue to the base and sprinkle the sand over it using a spoon (photo 20). Press down gently on the sand so that it is well stuck, and leave to dry before removing the excess.

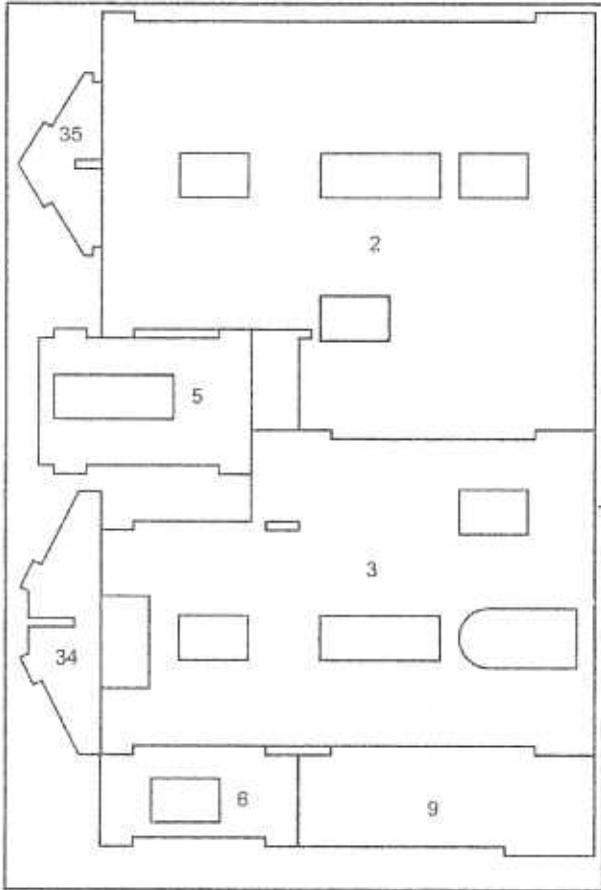
The velvet, imitation grass (ref. 3906 and ref. 3913), is applied in the same way as the sand (photo 21).

The moss used for the bushes and trees (ref. 3904) is broken up into pieces and glued as required by the model.

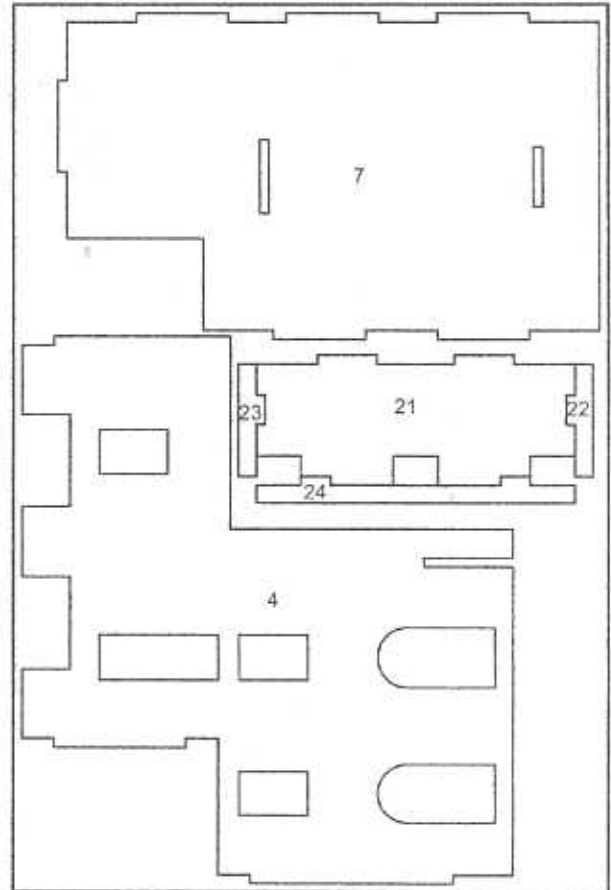
Decorate the structure, sand, moss and flock with water-based acrylic paint. First apply the predominant base colours and then the different tones on top of these to make the whole look more realistic. Use the dry brush technique to accentuate the texture of all the materials.

Dry brush technique:

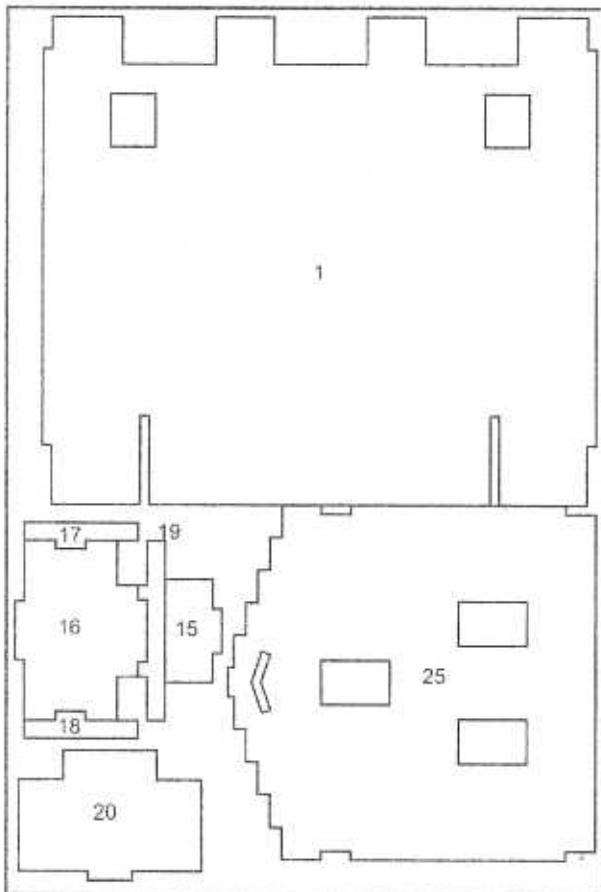
Dip the brush in a little paint and eliminate any excess with a cloth, so that the brush only lightly colours. Gently pass the brush over the zones to be decorated.



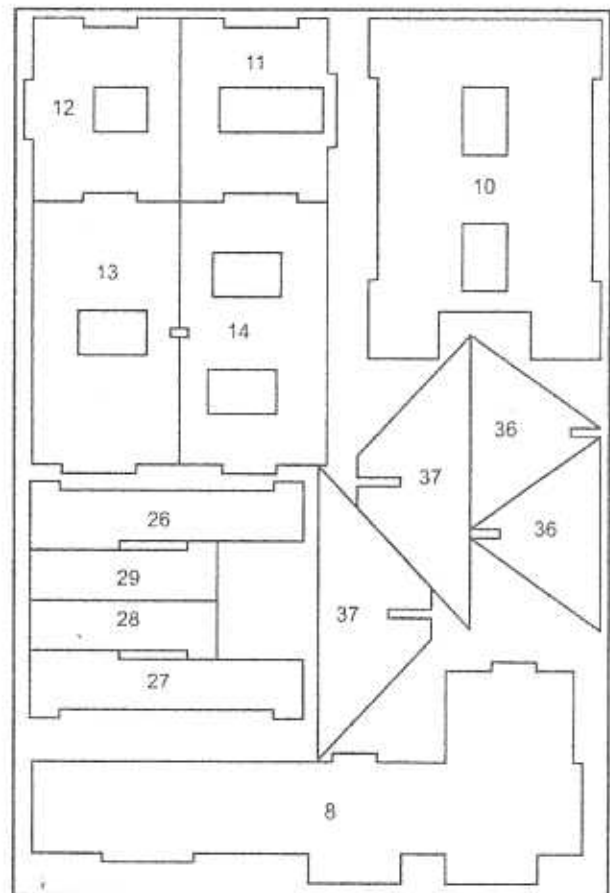
40959-1



40959-2



40959-3



40959-4

ORDEN DE COLOCACION DE PIEZAS / ORDER OF FITTING THE PARTS
 ORDINE COLLOCAZIONE DEI PEZZI / ORDRE DE MONTAGE DES PIÈCES
 EINBAUREIHFOLGE DER BAUTEILE / VOLGORDE VOOR DE PLAATSING VAN DE ONDERDELEN

SITGES
 REF. 40959
 v.4

PIEZA / PART PEZZO / PIÈCE / TEIL / ONDERDEEL	DESCRIPCIÓN	DESCRIPTION	DESCRIZIONE	DESCRIPTION	BEZEICHNUNG	BESCHRIJVING
1 a 29	Estructura de madera	Wooden structure	Struttura in legno	Structure en bois	Holzstruktur	Houten structuur
30	Ventana grande	Large window	Finestra grande	Grande fenêtre	großes Fenster	Groot raam
31	Puerta de balcón	Balcony door	Porta balcone	Porte de balcon	Tür Balkon	Balkondeur
32	Ventana pequeña	Small window	Finestra piccola	Petite fenêtre	Kleines Fenster	Klein raam
33	Puerta de arco	Arch door	Porta ad arco	Port d'arcade	Bogentür	Deur van de boog
34-35	Estructura de madera	Wooden structure	Struttura in legno	Structure en bois	Holzstruktur	Houten structuur
36-37	Estructura de madera	Wooden structure	Struttura in legno	Structure en bois	Holzstruktur	Houten structuur
38	Base	Base	Base	Base	Unterbau	Basis
39	Cerámica-D	Tiles - D	Ceramica-D	Céramique-D	Keramik-D	Keramik - D
40	Listón de 10 x 15 mm	10 x 15 mm strip	Listella da 10 x 15 mm	Listeau de 10 x 15 mm	Leiste 10 x 15 mm	Lat van 10 x 15 mm
41	Listón de 10 x 15 mm	10 x 15 mm strip	Listella da 10 x 15 mm	Listeau de 10 x 15 mm	Leiste 10 x 15 mm	Lat van 10 x 15 mm
42	Cerámica - I	Tiles - I	Ceramica - I	Céramique - I	Keramik - I	Keramik - I
43	Cerámica - E	Tiles - E	Ceramica - E	Céramique - E	Keramik - E	Keramik - E
44	Cerámica - H	Tiles - H	Ceramica H	Céramique - H	Keramik - H	Keramik - H
45	Listón de 2 x 5 mm	2 x 5 mm strip	Listella da 2 x 5 mm	Listeau de 2 x 5 mm	Leiste 2 x 5 mm	Lat van 2 x 5 mm
46	Listón de 2 x 3 mm	2 x 3 mm strip	Listella da 2 x 3 mm	Listeau de 2 x 3 mm	Leiste 2 x 3 mm	Lat van 2 x 3 mm
47	Adorno ventana grande	Large window adornment	Adorno finestra grande	Décoration grande fenêtre	Verzierung großes Fenster	Versiering groot raam
48	Adorno puerta arco	Arch door adornment	Adorno porta ad arco	Décoration porte arcade	Verzierung Bogentür	Versiering deur boog
49	Adorno ventana pequeña	Small window adornment	Adorno finestra piccola	Décoration petite fenêtre	Verzierung kleines Fenster	Versiering klein raam
50	Adorno puerta de balcón	Balcony door adornment	Adorno porta balcone	Décoration porte de balcon	Verzierung Balkontür	Versiering balkondeur
51	Baranda grande	Large rail	Ringhiera grande	Grande rampe	Großes Geländer	Grote veranda
52	Baranda pequeña	Small rail	Ringhiera piccola	Petite rampe	Kleines Geländer	Kleine veranda
53	Listón de 2 x 3 mm	2 x 3 mm strip	Listella da 2 x 3 mm	Listeau de 2 x 3 mm	Leiste 2 x 3 mm	Lat van 2 x 3 mm
54	Cerámica-D	Tiles - D	Ceramica - D	Céramique - D	Keramik - D	Keramik - D
55	Cerámica - E	Tiles - E	Ceramica - E	Céramique - E	Keramik - E	Keramik - E
56	Bolas adorno	Adornment balls	Palle adorno	Boules de décoration	Zierkugeln	Versieringsballen
57	Listón de 3 x 3 mm	3 x 3 mm strip	Listella 3 x 3 mm	Listeau de 3 x 3 mm	Leiste 3 x 3 mm	Lat van 3 x 3 mm
58	Palmera	Palm tree	Palma	Palmier	Palme	Palomboom
59	Cerámica - E	Tiles - E	Ceramica - E	Céramique - E	Keramik - E	Keramik - E
60	Arena Ref. 3914	Sand, Ref. 3914	Arena Ref. 3914	Sable Réf. 3914	Sand Ref. 3914	Zand Ref. 3914
61	Flokado Ref. 3906	Flocking, Ref. 3906	Flokado Ref. 3906	Flocage Réf. 3906	Flocken Ref. 3906	Versiering Ref. 3906
62	Listón de 3 x 3 mm	3 x 3 mm strip	Listella da 3 x 3 mm	Listeau de 3 x 3 mm	Leiste 3 x 3 mm	Lat van 3 x 3 mm
63	Cerámica - E	Tiles - E	Ceramica - E	Céramique - E	Keramik - E	Keramik - E
64-65	Conjunto mesa	Table assembly	Set tavolo	Ensemble table	Tischgruppe	Geheel van tafel
66-67	Conjunto silla	Seat assembly	Set sedia	Ensemble chaise	Stuhlgruppe	Geheel van stoel
68	Musgo Ref. 3904	Moss, Ref. 3904	Muschio Ref. 3904	Mousse Réf. 3904	Moos Ref. 3904	Mos Ref. 3904