

## BEFORE YOU START, GATHER TOGETHER ALL OF THE ASSEMBLY SUPPORT MATERIAL:

- General instructions
- Assembly photos
- List with the order that the parts must be assembled
- "IE" Structure identification sheet

## PREPARING THE MATERIAL:

In order to correctly identify the parts, before removing them from the wood sheets, you must mark them with the same numbers that appear on the "IE" sheet (structure identification).

## STARTING TO ASSEMBLE:

Using a cutting tool (photo 1), remove the parts from the sheets, eliminating the small tabs that hold them in place. In continuation gently sand down the parts with fine grain sandpaper, to eliminate rough, cross-grain edges.

Following the order indicated in the exploded drawings, from drawing no. 2 up to no. 6, glue the different parts of the structure in place. You can use white glue or quick drying glue (carefully read the manufacturers instructions for use). The result will be the structure as shown in photo 7.

To unify the joints and irregular surfaces use wood putty (photo 8). Once dry sand down and join the whole assembly together.

## PAINTING:

When painting the structure use matt finish water based acrylic paints (photos 9-10). Use the photos as a colours guide.

Before painting the structure, bear in mind that the slots for the door and windows when painted will be narrower and this could prevent the doors and windows slotting in correctly (See **FITTING DOORS AND WINDOWS** Section below).

For the painting the rest of the parts to be painted also use water-based acrylic paint.

## FITTING DOORS AND WINDOWS:

All of the doors and windows are slotted into place from the interior of the structure, in the slots provided to this end (photo 11). In some cases it is necessary to fit a section of strip to the bottom of the doors so that they are held in place (the measurements of this strip are indicated in the photos).

In continuation glue the structure to the base, taking as a reference the indicated measurements (photo 12). These measurements correspond to the rear of the structure.

## BLOCKS:

The models have one or more various types of block to make the different parts of the model. The measurements for cutting each block are listed on the assembly photos. Except in a few cases, measurements must be taken directly on the construction to ensure a better fit. The blocks are painted or varnished with acrylic water-based paints, depending on the model.

## FITTING THE CERAMIC TILE PARTS:

You can use white glue or quick-drying glue (carefully read the manufacturers instructions for use).

Always start by fitting the tiles at the bottom of the structure, first the parts that will not get in the way when fitting later parts (photo 13). Some parts will have to be cut and touched up in order to fit correctly (see photos 16-17).

### Models that incorporate ref. H tiles:

Before gluing the tiles line them up on the roofs so that they are proportionally distributed over the whole surface.

The tiles have different combinations and are joined to each other by a small side slot.

They can be broken to size by breaking off the tabs on both sides (photo 14).

These are fitted starting at the bottom of the roof, and placing one on top of the other (photo 15).

To ensure a good finish, they must be adapted with a file or other cutting tool (photos 16 and 17).

The tiles are used to cover various kinds of roofs or finials, as well as to make up different parts (photos 15, 18 and 19).

### Models that incorporate ref. D slates:

Before gluing the slates:

They do not have a side slot, like the ref. H tiles, but they can still be broken into smaller pieces (photo 14).

Depending on the model, they can be fitted one on top of the other or joined at the side (photo 15).

To ensure a good finish, they must be adapted with a file or other retouching tool (photos 16 and 17).

The slates are used to cover various kinds of roofs or finial, as well as to make up different parts (photos 15, 18 and 19).

The tiles and slates are the last of the ceramic parts that are attached to the construction.

Once all of these parts have been fitted decorate using water-based acrylic paints.

## EXTERIOR AMBIENCE:

Use the product packaging to simulate rocks. Cut out the necessary portions and shape by eroding them. Then attach these pieces using white glue.

To glue the sand (ref. 3914) in place, apply a fine layer of white glue to the base and sprinkle the sand over it using a spoon (photo 20). Press down gently on the sand so that it is well stuck, and leave to dry before removing the excess.

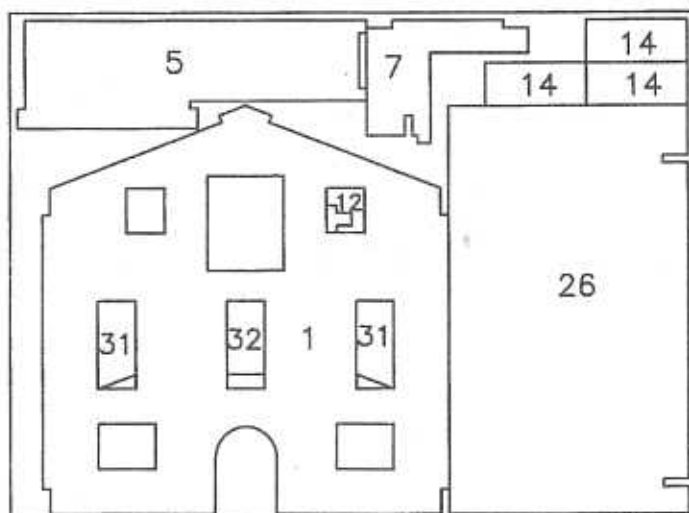
The velvet, imitation grass (ref. 3906 and ref. 3913), is applied in the same way as the sand (photo 21).

The moss used for the bushes and trees (ref. 3904) is broken up into pieces and glued as required by the model.

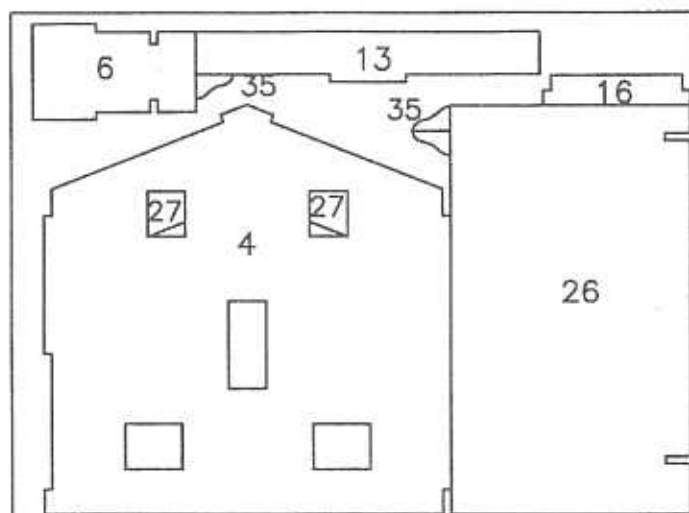
Decorate the structure, sand, moss and flock with water-based acrylic paint. First apply the predominant base colours and then the different tones on top of these to make the whole look more realistic. Use the dry brush technique to accentuate the texture of all the materials.

### Dry brush technique:

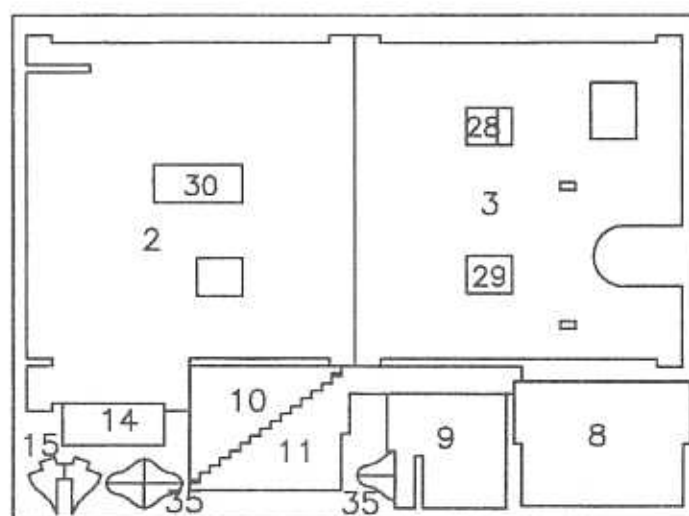
Dip the brush in a little paint and eliminate any excess with a cloth, so that the brush only lightly colours. Gently pass the brush over the zones to be decorated.



40956-1



40956-2



40956-3

PIEZA / PART

PEZZO / PIÉCE /

TEIL / ONDERDEEL

	DESCRIPCIÓN	DESCRIPTION	DESCRIZIONE	DESCRIPTION	BEZEICHNUNG	BESCHRIJVING
1 a 16	Estructura de madera	Wooden structure	Struttura in legno	Structure en bois	Holzstruktur	Houten structuur
17	Puerta balcón	Balcony door	Porta balcone	Porte balcon	Balkontür	Deur van het balkon
18	Ventana pequeña	Small window	Finestra piccola	Petite fenêtre	Kleines Fenster	Klein raam
19	Base	Base	Base	Base	Basis	Basis
20	Cerámica - F	Ceramic - F	Ceramica - F	Céramique - F	Keramik - F	Keramik - F
21	Cerámica - G	Ceramic - G	Ceramica - G	Céramique - G	Keramik - G	Keramik - G
22	Ventana grande	Large window	Finestra grande	Grande fenêtre	Großes Fenster	Groot raam
23	Puerta grande con arco	Large door with arch	Porta grande con arco	Grande porte avec arche	Große Bogentür	Grote deur met boog
24	Cerámica - D	Ceramic - D	Ceramica - D	Céramique - D	Keramik - D	Keramik - D
25	Cerámica - E	Ceramic - E	Ceramica - E	Céramique - E	Keramik - E	Keramik - E
26	Estructura de madera	Wooden structure	Struttura in legno	Structure en bois	Holzstruktur	Houten structuur
27 a 29	Estructura de madera	Wooden structure	Struttura in legno	Structure en bois	Holzstruktur	Houten structuur
30 a 32	Estructura de madera	Wooden structure	Struttura in legno	Structure en bois	Holzstruktur	Houten structuur
33	Cerámica - E	Ceramic - E	Ceramica - E	Céramique - E	Keramik - E	Keramik - E
34	Cerámica - H	Ceramic - H	Ceramica - H	Céramique - H	Keramik - H	Keramik - H
35	Estructura de madera	Wooden structure	Struttura in legno	Structure en bois	Holzstruktur	Houten structuur
36	Listón de 1 x 3 mm	Block 1 x 3mm	Listella da 1 x 3 mm	Liston 1 X 3 mm	Holzleiste 1 x 3 mm	Lat van 1 x 3 mm
37	Barandilla lateral	Side rail	Ringhiera laterale	Balustrade latérale	Seitliches Geländer	Balustrade zijkant
38	Listón de 3 x 3 mm	Block 3 x 3mm	Listella da 3 x 3 mm	Liston de 3 x 3 mm	Holzleiste 3 x 3 mm	Lat van 3 x 3 mm
39	Barandilla frontal	Front rail	Ringhiera frontale	Balustrade avant	Frontales Geländer	Balustrade voorkant
40 a 42	Listón de 1 x 3 mm	Block 1 x 3mm	Listella da 1 x 3 mm	Liston 1 X 3 mm	Holzleiste 1 x 3 mm	Lat van 1 x 3 mm
43	Cerámica - E	Ceramic - E	Ceramica - E	Céramique - E	Keramik - E	Keramik - E
44	Listón de 1 x 3 mm	Block 1 x 3mm	Listella da 1 x 3 mm	Liston 1 X 3 mm	Holzleiste 1 x 3 mm	Lat van 1 x 3 mm
45 a 48	Listón de 3 x 3 mm	Block 3 x 3mm	Listella da 3 x 3 mm	Liston de 3 x 3 mm	Holzleiste 3 x 3 mm	Lat van 3 x 3 mm
49 a 51	Listón de 4 x 4 mm	Block 4 x 4mm	Listella da 4 x 4 mm	Liston de 4 x 4 mm	Holzleiste 4 x 4 mm	Lat van 4 x 4 mm
52	Rocas (caja de embalaje)	Rocks (packaging box)	Rocce (scatola imballaggio)	Roches (boîte d'emballage)	Steine (Verpackung)	Rotsen (verpakking doos)
53	Cerámica - E	Ceramic - E	Ceramica - E	Céramique - E	Keramik - E	Keramik - E
54	Arena Ref. 3914	Sand Ref. 3914	Arena Ref. 3914	Sable Réf. 3914	Sand Ref. 3914	Zand Ref. 3914
55	Cerámica - H	Ceramic - H	Ceramica - H	Céramique - H	Keramik - H	Keramik - H
56	Flokado Ref. 3906	Flock Ref. 3906	Flokado Ref. 3906	Flocage Réf. 3906	Beflockung Ref. 3906	Velvet Ref. 3906
57	Flokado Ref. 3913	Flock Ref. 3913	Flokado Ref. 3913	Flocage Réf. 3913	Beflockung Ref. 3913	Velvet Ref. 3913
58 - 59	Listón de 3 x 3 mm	Block 3 x 3mm	Listella da 3 x 3 mm	Liston de 3 x 3 mm	Holzleiste 3 x 3 mm	Lat van 3 x 3 mm
60 - 61	Listón de 1 x 3 mm	Block 1 x 3mm	Listella da 1 x 3 mm	Liston 1 X 3 mm	Holzleiste 1 x 3 mm	Lat van 1 x 3 mm
62	Listón de 3 x 3 mm	Block 3 x 3mm	Listella da 3 x 3 mm	Liston de 3 x 3 mm	Holzleiste 3 x 3 mm	Lat van 3 x 3 mm
63	Listón de 1 x 3 mm	Block 1 x 3mm	Listella da 1 x 3 mm	Liston 1 X 3 mm	Holzleiste 1 x 3 mm	Lat van 1 x 3 mm
64	Listón de 3 x 3 mm	Block 3 x 3mm	Listella da 3 x 3 mm	Liston de 3 x 3 mm	Holzleiste 3 x 3 mm	Lat van 3 x 3 mm
65	Listón de 1 x 3 mm	Block 1 x 3mm	Listella da 1 x 3 mm	Liston 1 X 3 mm	Holzleiste 1 x 3 mm	Lat van 1 x 3 mm