

**ORDEN DE COLOCACION DE PIEZAS / ORDER OF FITTING THE PARTS**  
**ORDINE COLLOCAZIONE DEI PEZZI / ORDRE DE MONTAGE DES PIÈCES**  
**EINBAUREIHENFOLGE DER BAUTEILE / VOLGORDE VOOR DE PLAATSIJNG VAN DE ONDERDELEN**

**TRIANA**  
**REF. 40954**

v.3

PIEZA / PART

PEZZO / PIÈCE /

TEL / ONDERDEEL

	DESCRIPCION	DESCRIPTION	DESCRIZIONE	DESCRIPTION	BEZEICHNUNG	BESCHRIJVING
1 a 16	Estructura de madera	Wooden structure	Struttura di legno	Structure en bois	Holzstruktur	Houten structuur
17	Ventanas	Windows	Finestre	Fenêtres	Fenster	Ramen
18	Listón de 1,5 x 3 mm	1,5 x 3 mm. Strip	Listela da 1,5 x 3 mm	Listeau de 1,5 x 3 mm	Holzleiste 1,5 x 3 mm	Lat van 1,5 x 3 mm
19	Puertas	Doors	Porte	Portes	Türen	Deuren
20	Puertas de balcón	Balcony doors	Porte balcone	Portes de balcon	Balkontüren	Deuren van het balkon
D	Base	Base	Base	Base	Grundplatte	Basis
21 a 23	Ceramica ref 1150	Tiles ref 1150	Ceramica ref 1150	Céramique réf 1150	Keramik Ref 1150	Keramik ref 1150
E	Estructura de madera	Wooden structure	Struttura di legno	Structure en bois	Holzstruktur	Houten structuur
K	Ceramica ref 1148	Tiles ref 1148	Ceramica ref 1148	Céramique réf 1148	Keramik Ref 1148	Keramik ref 1148
B	Ceramica ref 3001	Tiles ref 3001	Ceramica ref 3001	Céramique réf 3001	Keramik Ref 3001	Keramik ref 3001
L	Ceramica ref 3230	Tiles ref 3230	Ceramica ref 3230	Céramique réf 3230	Keramik Ref 3230	Keramik ref 3230
A	Ceramica ref 3240	Tiles ref 3240	Ceramica ref 3240	Céramique réf 3240	Keramik Ref 3240	Keramik ref 3240
H	Listón de 1 x 3 mm	1 x 3 mm. Strip	Listela da 1 x 3 mm	Listeau de 1 x 3 mm	Holzleiste 1 x 3 mm	Lat van 1 x 3 mm
24	Teselas	Tesserae	Tasselli	Tesselles	Bodensteine	Mosaicsteentje
25	Grifo	Tap	Rubinetto	Robinet	Hahn	Waterkraan
26	Ceramica ref 2060	Tiles ref 2060	Ceramica ref 2060	Céramique réf 2060	Keramik Ref 2060	Keramik ref 2060
27	Rejas de ventana	Window bars	Inferrate finestra	Grilles de fenêtre	Fenstergitter	Hekwerk van het raam
28 a 31	Dinteles	Linteis	Architrave	Linéaux	Tür- und Fensterstürze	Bovendrempel
32	Escuadras	Brackets	Squadre	Equerres	Winkel	Hoeken
33	Estructura de madera	Wooden structure	Struttura di legno	Structure en bois	Holzstruktur	Houten structuur
34	Rejas balcón	Balcony bars	Inferrate balcone	Grilles balcon	Balkongitter	Hekwerk van het balkon
35	Baranda lateral	Side handrail	Ringhiera laterale	Balustrade laterale	Seitliches Geländer	Balustrade van de zijkant
36	Baranda frontal	Front handrail	Ringhiera frontale	Balustrade avant	Frontales Geländer	Balustrade van de voorkant
37	Faroles	Lanterns	Lampioni	Lanternes	Leuchten	Verlichting
38	Remates bola	Newel caps	Rifiniture pala	Finition boule	Zierkugeln	Afwerking bol
39	Tubo pozo	Well tube	Tubo pozzo	Tube puits	Bünnenrohr	Pijp van de put
40	Tapa pozo	Well cover	Copertura pozzo	Couvercle puits	Bünnendeckel	Deksel van de put
41	Forja pozo	Well winding-piece	Fucinatura pozzo	Forge puits	Bünnengeschmiede	Hekwerk van de put
42	Piedras entrada	Entry stones	Pierre ingresso	Pierres entree	Eingangsteine	Stenen van de ingang
43	Arbol	Tree	Albero	Arbre	Baum	Boom
44	Veleta	Weathercock	Anemoscopio	Girovete	Wetterfahne	Windwijzer
45	Arena ref.3914	Sand ref.3914	Sabbia ref.3914	Sable ref.3914	Sand Ref.3914	Zand ref.3914
46	Rejas entrada	Entry bars	Grate Ingresso	Grilles entrée	Torgitter	Hekwerk van de ingang
47	Musgo ref.3904	Moss ref.3904	Muschio ref.3904	Mousse ref.3904	Moos Ref.3904	Mos ref.3904

## BEFORE YOU START, GATHER TOGETHER ALL OF THE ASSEMBLY SUPPORT MATERIAL:

- General instructions
- Assembly photos
- List with the order that the parts must be assembled
- "IE" Structure identification sheet

## PREPARING THE MATERIAL:

In order to correctly identify the parts, before removing them from the wood sheets, you must mark them with the same numbers that appear on the "IE" sheet (structure identification).

## STARTING TO ASSEMBLE:

Using a cutting tool (**photo 1**), remove the parts from the sheets, eliminating the small tabs that hold them in place. In continuation gently sand down the parts with fine grain sandpaper, to eliminate rough, cross-grain edges.

Following the order indicated in the exploded drawings, from drawing no. 2 up to no. 6, glue the different parts of the structure in place. You can use white glue or quick drying glue (carefully read the manufacturers instructions for use). The result will be the structure as shown in photo 7.

To unify the joints and irregular surfaces use wood putty (**photo 8**). Once dry sand down and join the whole assembly together.

## PAINTING:

When painting the structure use matt finish water based acrylic paints (**photos 9-10**). Use the photos as a colours guide.

Before painting the structure, bear in mind that the slots for the door and windows when painted will be narrower and this could prevent the doors and windows slotting in correctly (**See FITTING DOORS AND WINDOWS Section below**).

For the painting the rest of the parts to be painted also use water-based acrylic paint.

## FITTING DOORS AND WINDOWS:

All of the doors and windows are slotted into place from the interior of the structure, in the slots provided to this end (**photo 11**). In some cases it is necessary to fit a section of strip to the bottom of the doors so that they are held in place (the measurements of this strip are indicated in the photos).

In continuation glue the structure to the base, taking as a reference the indicated measurements (**photo 12**). These measurements correspond to the rear of the structure.

## BLOCKS:

The models have one or more various types of block to make the different parts of the model. The measurements for cutting each block are listed on the assembly photos. Except in a few cases, measurements must be taken directly on the construction to ensure a better fit. The blocks are painted or varnished with acrylic water-based paints, depending on the model.

## FITTING THE CERAMIC TILE PARTS:

You can use white glue or quick-drying glue (carefully read the manufacturers instructions for use).

Always start by fitting the tiles at the bottom of the structure, first the parts that will not get in the way when fitting later parts (**photo 13**). Some parts will have to cut and touched up in order to fit correctly (**see photos 16-17**).

### Models that incorporate ref. H tiles:

Before gluing the tiles line them up on the roofs so that they are proportionally distributed over the whole surface.

The tiles have different combinations and are joined to each other by a small side slot.

They can be broken to size by breaking off the tabs on both sides (**photo 14**).

These are fitted starting at the bottom of the roof, and placing one on top of the other (**photo 15**).

To ensure a good finish, they must be adapted with a file or other cutting tool (**photos 16 and 17**).

The tiles are used to cover various kinds of roofs or finials, as well as to make up different parts (**photos 15, 18 and 19**).

### Models that incorporate ref. D slates:

Before gluing the slates.

They do not have a side slot, like the ref. H tiles, but they can still be broken into smaller pieces (**photo 14**).

Depending on the model, they can be fitted one on top of the other or joined at the side (**photo 15**).

To ensure a good finish, they must be adapted with a file or other retouching tool (**photos 16 and 17**).

The slates are used to cover various kinds of roofs or finial, as well as to make up different parts (**photos 15, 18 and 19**).

The tiles and slates are the last of the ceramic parts that are attached to the construction.

Once all of these parts have been fitted decorate using water-based acrylic paints.

## EXTERIOR AMBIENCE:

Use the product packaging to simulate rocks. Cut out the necessary portions and shape by eroding them. Then attach these pieces using white glue.

To glue the sand (**ref. 3914**) in place, apply a fine layer of white glue to the base and sprinkle the sand over it using a spoon (**photo 20**) Press down gently on the sand so that it is well stuck, and leave to dry before removing the excess.

The velour, imitation grass (**ref. 3906** and **ref. 3913**), is applied in the same way as the sand (**photo 21**).

The moss used for the bushes and trees (**ref. 3904**) is broken up into pieces and glued as required by the model.

Decorate the structure, sand, moss and flock with water-based acrylic paint. First apply the predominant base colours and then the different tones on top of these to make the whole look more realistic. Use the dry brush technique to accentuate the texture of all the materials.

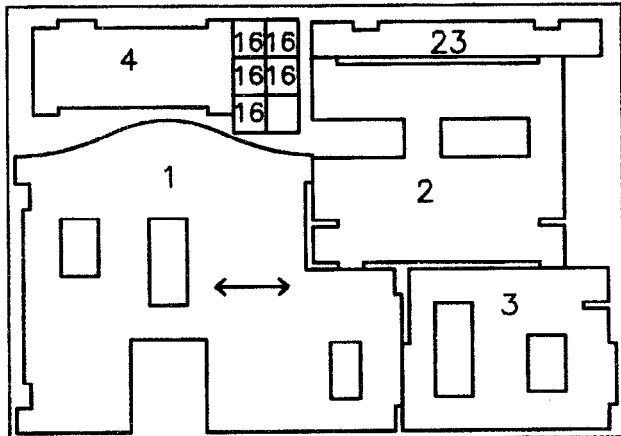
### Dry brush technique:

Dip the brush in a little paint and eliminate any excess with a cloth, so that the brush only lightly colours. Gently pass the brush over the zones to be decorated.

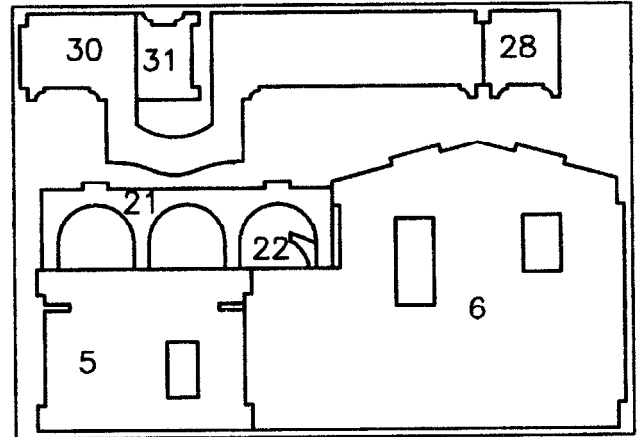
# IE

# TRIANA

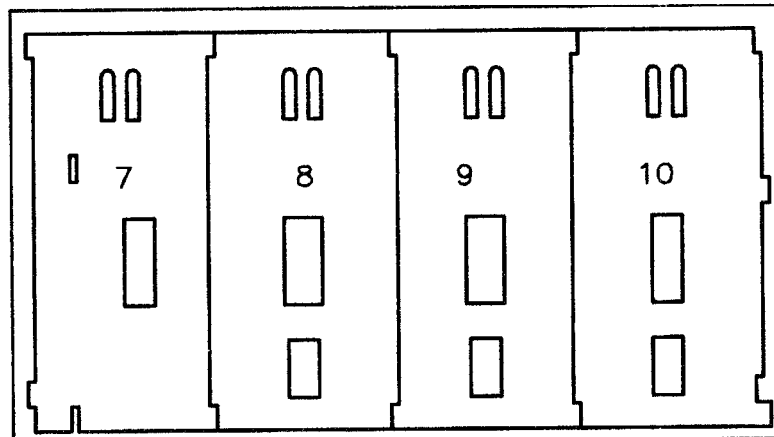
Ref.40954



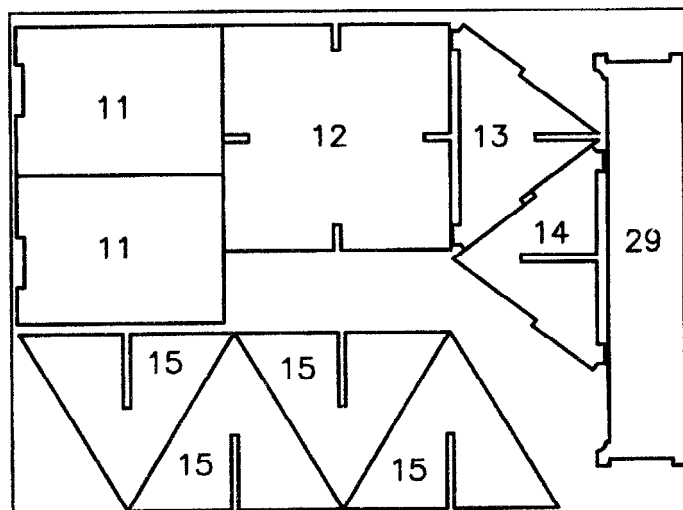
40954-1



40954-2



40954-3



40954-4